

# Livermore

# Lithogram



**Volume XXXIX, Number 4** **Livermore Valley Lithophiles**  
**April 2014** **Livermore, California**

Next General Meeting:  
 Thursday, April 10, 2014  
**Livermore Library Community Room**  
 7:30 PM

**Program:**

**Montana Sapphire**

**Look-and-See What You Can Find**

Next Board Meeting:  
 Thursday, April 24, 2014  
**At the Shop**  
 Members are welcome to attend!

**Meeting Location:** Livermore Library Community Room 'A'

**Refreshments:** B

<b>MEMBERS DUES ARE DUE</b>	
<i>Inside this issue:</i>	
SPECIAL APRIL MEETING	2
Board Meeting Minutes March 27	3
General Meeting Minutes Feb. 13	4
Alaskan Volcanoes - Part 14	5
ALAMEDA COUNTY FAIR	6
Beading Buddies	6
Shows & Events & Field Trips	7

**Presidents Message:**

In last month's Lithogram I posed this word challenge: *Who can tell me the difference between a "LENTIL CUT" and a "FULL CUT"?* I received no answers! A Lentil Cut is a cabochon cut in which the upper and lower portions of the stone are identical. A Full Cut is a gemstone with 58 facets. At this point I'm not sure if anyone had read the president's message or simply didn't know the answer to the word challenge. So I'm going to offer another word challenge, but this time offer a **prize** to the first person who can answer the question correctly. Who can tell me the difference between "WHITE GOLD" and "YELLOW GOLD"? You are allowed to search the answer by any means (Google, encyclopedia, etc.).

For those who do read this message, please join us for April's General Meeting. We will be sapphire hunting. This is something new for us that will entail sorting through sapphire mine ore obtained directly from Montana. There is at least 100 carats guaranteed in the material, but it will require taking the time sorting it out. We will do this as a group. The only requirement for participation is that if you find a "keeper", then you have to tell a joke or a funny story to the rest of the group. So make sure you have some ready. We see you at the meeting.

## FUN FUN - Field Trip at a Meeting - FUN FUN April 10, 2014

**The Lithophiles have over 100 pounds of Sapphire containing gravel for the members to do a Look-and-See what you can find at the general meeting in April. We will have paper plates for you to use to hunt for your Gems.**

**Come and have a hands on for the program section of our April meeting.**

### Montana Sapphire Mine

Gem Mountain in Montana was first developed in the 1890's and has since produced more than 180 million carats of sapphires! Sapphires are some of the rarest gemstones in the world, but not here. Gem Mountain in Montana is the source for every known color of sapphire and some colors found nowhere else. When heat treated and faceted they have a brilliance that can't be beat by gems from anywhere else in the world.



Gravel containing Sapphires



Gravel As Shipped



Sapphire High Grade

## **Minutes of the Board Meeting**

March 27, 2014

Present: Lee Davisson, Bill Bish, Dick Freason, Andrea Freason, Molly Alexander

Discussed upcoming general meetings:

### **April 10, 2014**

Sapphire dig – Lee bought 50 lbs. of raw material from Montana so we can dig for gold...Oops, I mean sapphire. The remaining material will be saved for the picnic and November show. The winner is required to tell a story or joke.

### **May 8, 2014**

The 4-H Club members will present their projects.

### **June 12, 2014**

Bill Beiriger will discuss safety issues.

### **September 11, 2014**

Fossils

### **Treasurer**

Bill Bish e-filed the 2013 federal tax return. Beth Myers has volunteered to audit the tax files, a federal requirement every two years.

### **Shop**

The old wheel will be resurfaced. The board discussed buying a large quantity of settings so members can finish their projects. Also discussed researching to buy a pixie – portable gem-maker. Cost ≈ \$1500.

## **Rocks at Gruver's Ranch**

A group of the members picked up all the rocks that were stored at the Gruver's Ranch and transferred them to the Bankhead Ranch. We now have a large quantity of material for the silent auction for the next several Lithoramas. We filled up the floor of two pick-ups with two layers of buckets of mostly cutting rock, most of this material came from the Iannucci's after they moved from the house that Chris and Rich now live in and also from the last house the Joe and Pat lived in. There is also material that we can make use of for the Lithophiles. Jim Gruver had the buckets so well protected that most of them still have the locality labels on them.

I wish to thank Chris and Rich, Dick, Joan, Andrea, Pat and Rachel for helping me pick up all the rocks. I also want to thank Jim Gruver's daughter Barbara how did a lot of the Back Work.

**So - Thank You - Thank You.**

Bill Beiriger

## Minutes of the General Meeting

March 13, 2014

### Business

The Vallejo show is this weekend – March 15-16.

### Plans for General meetings:

April 10 – **Buckets of Montana Sapphire** will be brought to the meeting. Members will be divided into groups to sort through the buckets for gem sapphire.

May 8 – Members of the 4-H Club will present their projects.

June 12 – Bill Beiriger will discuss safety, prevention, and rules while collecting on Field Trips and working in the Shop.

### Possible Field Trip:

It was suggested that a field trip to Sibley Volcanic Regional Preserve in the Oakland/Berkeley hills be planned.

### Correspondence:

The club received a thank you card from the LVJUSD elementary school science teachers for the \$500 that we gave them.

### Treasurer's Report

Anyone who owes dues can pay tonight.

### Shop Report

The 3000 grit wheel was replaced. The water heater has to be turned off after it is used.

### Guest Speaker Beth Myers

Beth described how she collects rocks, minerals, and clay from the embankments along Mines Road to make natural pigments for her paintings. The field trip on Saturday, March 15 to her collection locations on Mines Road was fascinating. We concluded the trip with lunch at Junction.

## A Fun Note for You Harry Potter Fans.

Did you know there is a Muggle version of Quidditch? (*I did not know about this sport and probably don't know about many other sports.*) It is played with Volley balls, Dodge balls and a Tennis Ball. You must keep a Broom between your legs at all times. This is an international sport and is played on a field about the size of an ice hockey rink.

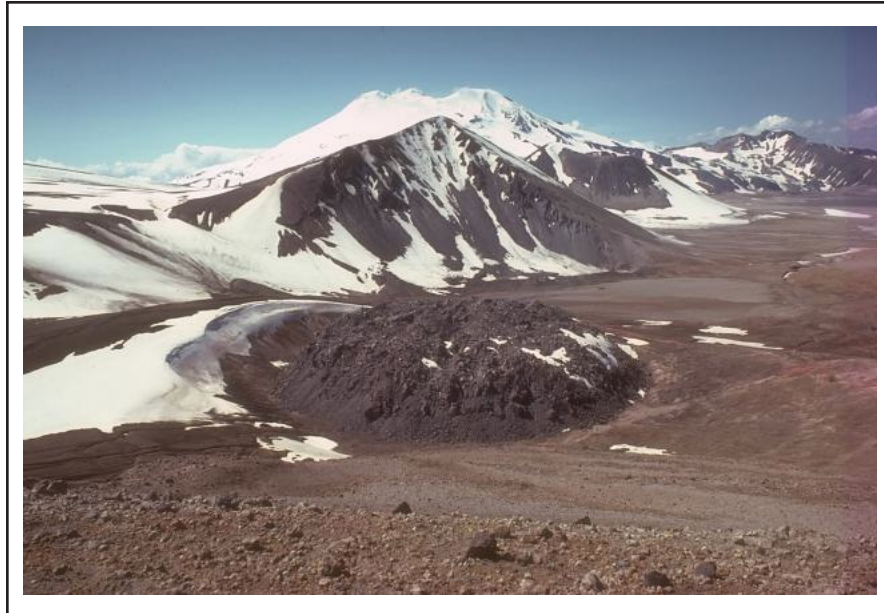
If interested go to [http://en.wikipedia.org/wiki/Muggle\\_Quidditch](http://en.wikipedia.org/wiki/Muggle_Quidditch).

Now compare this with the historical Aztec Game of **Ullamalitzli**. Today the game is still played as **Ulama**.

## **The Volcanoes of Alaska.**

Compiled by Bill Beiriger

**Information and Photos from the Global Volcanism Program - Smithsonian Institution.**



### **Novarupta - Alaska Peninsula**

**Last Eruption - 1912**

**2,759 feet**

**58.27° N 155.157° W**

Novarupta, the least topographically prominent volcano in the Katmai area, was formed during a major eruption in 1912. This eruption was the world's largest during the 20th century and produced a voluminous rhyolitic airfall tephra and the renowned Valley of Ten Thousand Smokes (VTTTS) ash flow. At the end of the eruption a small, 65-m-high, 400-m-wide lava dome grew to an elevation of 841 m within the source vent of the VTTTS ashflow, a 2-km-wide area of subsidence NW of Trident volcano. The NE side of the Falling Mountain lava dome of the Trident volcanic cluster, as well as Broken Mountain and Baked Mountain, was removed by collapse of the Novarupta depression, which is marked by radial and scalloped arcuate fractures. Much larger collapse took place at Katmai volcano, 10 km to the east, where a 3 x 4 km wide caldera formed in response to magma reservoir drainage toward Novarupta.

Photo by Tom Miller (U.S. Geological Survey, Alaska Volcano Observatory).

<http://www.volcano.si.edu/world/volcano>

### Alameda County Fair



Members It's almost county fair time. Plan on putting in a display - just putting in a display will get you two free passes and a free parking pass. Go to the fair web page at <http://www.alamedacountyfair.com/2014fair/index.php>. Then goto [http://acfair-rexhibits.com/pdf/adult\\_exhibits/Adult\\_Hobby\\_Collections.pdf](http://acfair-rexhibits.com/pdf/adult_exhibits/Adult_Hobby_Collections.pdf). Prizes range from \$10.00 to \$25.00, but remember even if you don't win you still get in FREE.

**Juniors - Try your hand at making a display.**  
**Also think about doing a Lithophiles Competitive Display.**

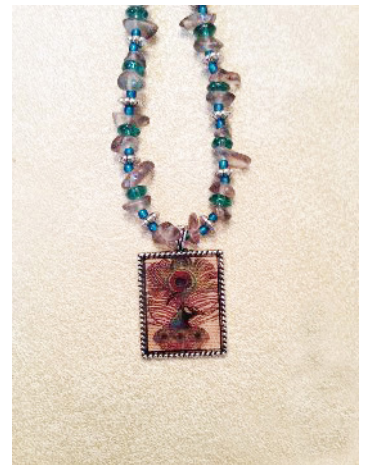
### Beading Buddies



Natashia Iannucci



Beading Buddies at Pat Iannucci's



Natashia Iannucci



Sue Fernandez

# California Shows And Events

## 2014

**April 12 - 13:** SAN JOSE, CA, **Santa Clara Valley Gem & Mineral Society**, Santa Clara County Fairgrounds, 344 Tully Road, Hours: 10 - 5 daily, Contact: Frank Mullaney, (408) 266- 1791; (408) 691-2656 (cell) Email: info@scvgms.org, Website: www.scvgms.org

**April 12 - 13:** PARADISE, CA  
**Paradise Gem & Mineral Society**  
Elks Lodge, 6309 Clark Road  
Hours: Sat 10 - 5; Sun 10 - 4  
Contact: Manuel Garcia, (530) 877-7324  
Email: paradisegemmineralclub@yahoo.com  
Website: www.paradisegem.org

**April 19 - 20:** MARIPOSA, CA, **Mariposa Gem & Mineral Society**, Mariposa County Fairgrounds, Fairgrounds Drive (Hwy 49 South - 1.8 miles south of Mariposa, Hours: 10 - 6 daily, Contact: Martin Foden, (209) 742- 4036, Email: martin@safarigold.com, Website: www.camineralmuseum.com.

**April 26 - 27:** SANTA CRUZ, CA, **Santa Cruz Mineral & Gem Society**, Santa Cruz Civic Auditorium , Church St & Center St, Hours: 10 - 5 daily, Contact: Dean Welder, (408) 353-2675, Website: www.scmgs.org

May 3 - 4: JACKSON, CA  
Amador County Gem & Mineral Society  
Kennedy Mine  
12594 Kennedy Mine Rd (off Hwys 49/88)  
Hours: 10 - 4 daily  
Contact: Margaret Kolaczyk  
Email: blackwolf@volcano.net

**May 10 - 11:** RENO, NV  
**Reno Gem & Mineral Society**  
Reno-Sparks Livestock Event Center  
1350 N. Wells Avenue  
Hours: Sat 10 - 5; Sun 10 - 4  
Contact: Steve Norman, (775) 358-7322, cell (775) 560-4782  
Email: snorm11@hotmail.com  
Website: www.renorockhounds.com

**May 30 - June 1:**  
POMONA, CA  
**2014 CFMS**  
**Show and Conference**  
Fairplex, 1101 W. McKinley Ave  
POMONA, CA  
to be hosted by the  
Pasadena Lapidary Society  
Show Website:  
www.cfms2014show.com

**November 22-23:** LIVERMORE, CA  
**Livermore Valley Lithophiles**  
Lithorama 2014 is a Gem and Mineral Show and Sale & will be held at the 'BARN' in Livermore, 3131 Pacific Ave., off South Livermore Ave.  
Saturday 10:00 to 5:00  
Sunday 10:00 to 4:00  
info@lithophiles.com  
www.lithophiles.org

Show information is available at the California Federation of Mineralogical Societies website: [www.cfmsinc.org](http://www.cfmsinc.org)

### Additional Resources:

American Federation of Mineralogical Societies website: [www.amfed.org](http://www.amfed.org)

American Lands Access Association website: [www.amerlands.org](http://www.amerlands.org)

CO-OP website: [www.coop.freeservers.com](http://www.coop.freeservers.com)

## Field Trips

## Livermore Valley Lithophiles

Bill Beiriger, Editor  
P.O. Box 626  
Livermore, CA 94551-0626  
info@lithophiles.com

We're on the Web at [www.lithophiles.org](http://www.lithophiles.org)



## Elected Officers and Club Information

### Elected Officers:

**President** OPEN  
**V. President** Lee Davisson ( leedavisson@sbcglobal.net )  
**Secretary** Molly Alexander (925) 606-6977  
**Treasurer** Bill Bish ( bcbish@att.net )

**Membership:** The Livermore Valley Lithophiles invites to its membership anyone genuinely interested in minerals, gems, lapidary, geology or any of the other earth sciences, and who desires association with others of like interests. Membership in our club consists of three classes: Senior, anyone eighteen years or older; Junior, anyone under eighteen; and Honorary. Dues are for the calendar year and are as prescribed in the by-laws, Article III. \$25.00 per family, \$20.00 per individual and \$10.00 for Juniors (twelve and older.)

**Meetings:** General Meeting – Second Thursday of each month, 7:30 p.m. Civic Center Livermore Library Community Room (**Locations change goto Lithophiles WEB-SITE**). Board Meeting – Fourth Thursday of each month, 7:30 p.m. at the Club Shop or to be announced in the *Lithogram*. Any special meetings or places will be published in the *Lithogram*.

**Club Shop:** The shop at the Barn is open to club members 7:00 p.m. to 10:00 p.m.. on Tuesday nights. If no one arrives by 7:30 p.m.. or if the Shop Foreman has not been informed a member will arrive late, then the shop will close at 7:30 p.m. Shop Foreman, Stephanie Goldsmith (925) 447-1722.

**Field Trips:** Location and date will be published in the *Lithogram*.

**Bulletin:** *Livermore Lithogram*. Published monthly and mailed or emailed to active members and guests. News of interest, reports and articles must be received by the first Tuesday of the month. Articles may be reprinted by giving proper credit.

**Editor:**  
Bill Beiriger,  
Livermore, CA 94551-0626,  
email: info@lithophiles.com

**Shop open every Tuesday at 7:00 PM**

**General Meeting April 10th, at 7:30 PM**  
**Board Meeting April 24th 7:30, At the SHOP**